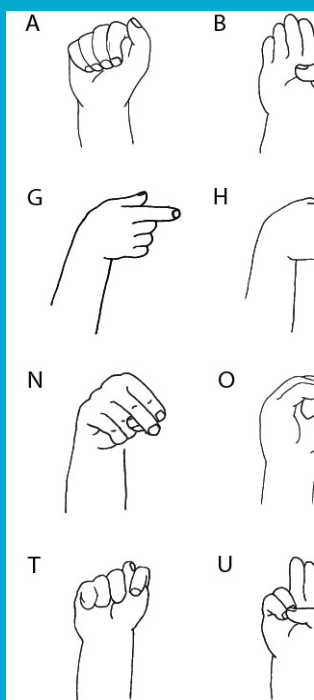


Sign Language

ABC Writing

FULL
ALPHABET

Lesson Plan Book 20-A

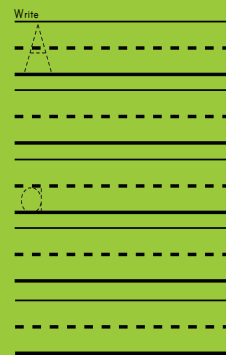
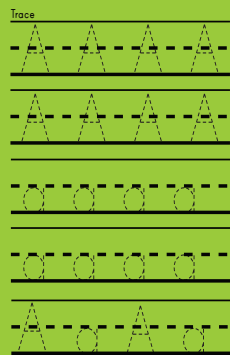
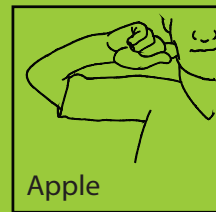
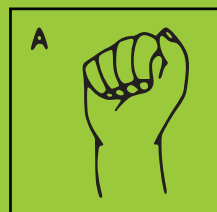


Learn ABC Signs

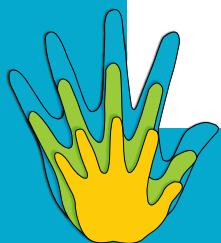
Learn ASL ABCs

Find the Letter

Practice Writing



NOW I know
my ABCs!



ASLTeachingResources.com



ASL Teaching Resources

brought to you by



This book belongs to



More resources at: ASLTeachingResources.com

Benefits of using sign language in the classroom, homeschool, or childcare:

- ✓ increases test scores
- ✓ helps students focus
- ✓ increases confidence
- ✓ great for behavior management
- ✓ engages students in learning
- ✓ redirects focus
- ✓ successful quiet times
- ✓ enhances literacy development
- ✓ boosts comprehension
- ✓ creates an engaging learning environment
- ✓ creates a more harmonious classroom
- ✓ introduces a new language
- ✓ involves low verbal or shy children in communication
- ✓ enhances communication skills

Hints for using this book:

1. Start with a sign each day or each week, building sign vocabulary as you go.
2. When teaching new vocabulary, SHOW the written word in English, SIGN the word in ASL, and SAY the word. Incorporating all three learning styles (visual, auditory, kinesthetic) is a powerful tool to engage students.
3. Increase receptive and expressive vocabulary with our flashcards, dice, and videos.
4. Send home handouts for parents to learn and reinforce signs learned.

Ideas for incorporating sign language in your daily activities:

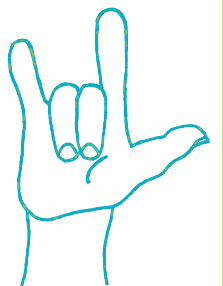
1. Use signs daily, especially during your routine transitions (lunch, bathroom).
2. When signing, make eye contact and keep your hands empty when possible.
3. Use objects and fingerspelling to introduce signs (e.g. teach the sign "apple" and the letter "a" while showing an apple). This iconic approach increases comprehension.
4. During activities, reading, or singing: sign key words, have students sign them, or ask questions where children sign the answer.
5. Have a theme day to emphasize new signs. Each time the word is said it must be signed.
6. When teaching reading skills or during story time, use signs for key words. Tape the flash cards throughout your books at the appropriate places. Children can read and be reminded of the signs. The added dimension of signing will help to reinforce vocabulary.
7. Use sign as a tool in classroom management by directing students as to what to do next or to address a student across the room.
8. Incorporating fingerspelling can provide an additional method to learning new spelling words, engaging children who are more visual or kinesthetic.
9. Dedicate a place in your room for the wall charts. Add more as you learn.
10. Introduce quiet times where children can only communicate in sign to each other.

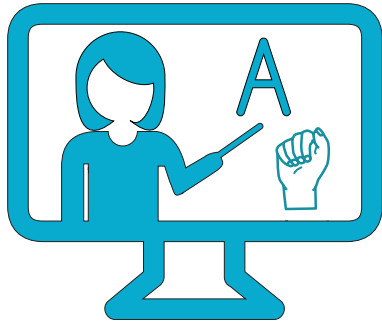
Bonus: Smile and have fun while you create a fun learning environment!





brought to you by





ASL Teaching Resources

brought to you by



After years of working in the education system, my question was where are the resources for teaching sign language? Sure, I could find the ABCs and 1-10, but I needed more than that. I decided to make it happen.

All of our ASL resources are not only from years of experience in the educational system but also as a Nationally Certified Interpreter (that just means I'm fluent in sign). We have hundreds of sign resources for you to use to teach hearing, deaf, and special needs children.

Our resources are created for:

- TEACHERS** to save you hours of research. Everything is ready to go.
- CHILDREN** to have a fun, interactive, hands-on learning experience.
- PARENTS** to reinforce the lesson at home. (Handouts are only available in Lesson Plan books.)

Send us your feedback and ideas as to how we can better serve you.

We would be honored if you'd share our site with others. Happy signing!

ASL Dictionary at: ASLTeachingResources.com/Dictionary



ASL Teaching Resources

brought to you by



ASL Books- Collect the entire series!

Lesson Plans - Wall Charts - Coloring Books

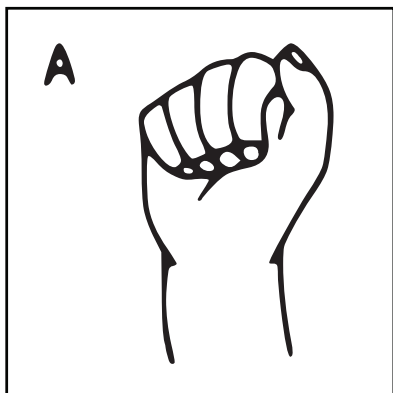
1. My First Signs-Infant
2. My First Signs-Preschool
3. Directions
4. Answers
5. Food
6. Bathroom
7. Holiday Vol. 1
8. Holiday Vol. 2
9. School Days
10. Animals
11. Outdoors
12. Emotions
13. Weather
14. Manners
15. Clothes
16. Calendar
17. Numbers
18. Day Care
19. Colors
20. ABCs

ASL Gifts at: ASLTeachingResources.com/Shop

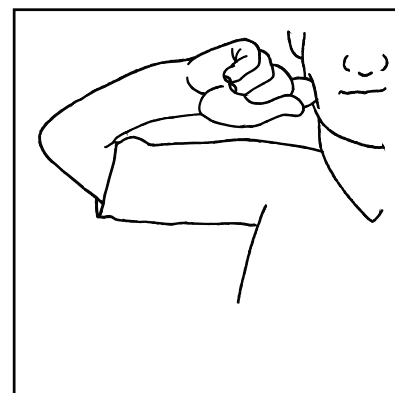
Name

ASLTeachingResources.com

Date



A a
Apple

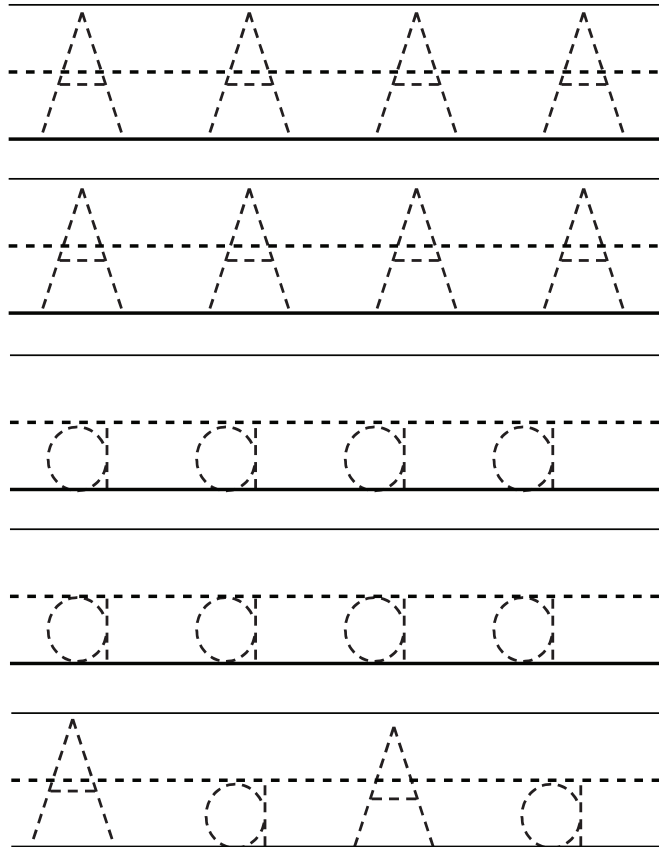


Twist wrist 2x so knuckle on cheek moves.

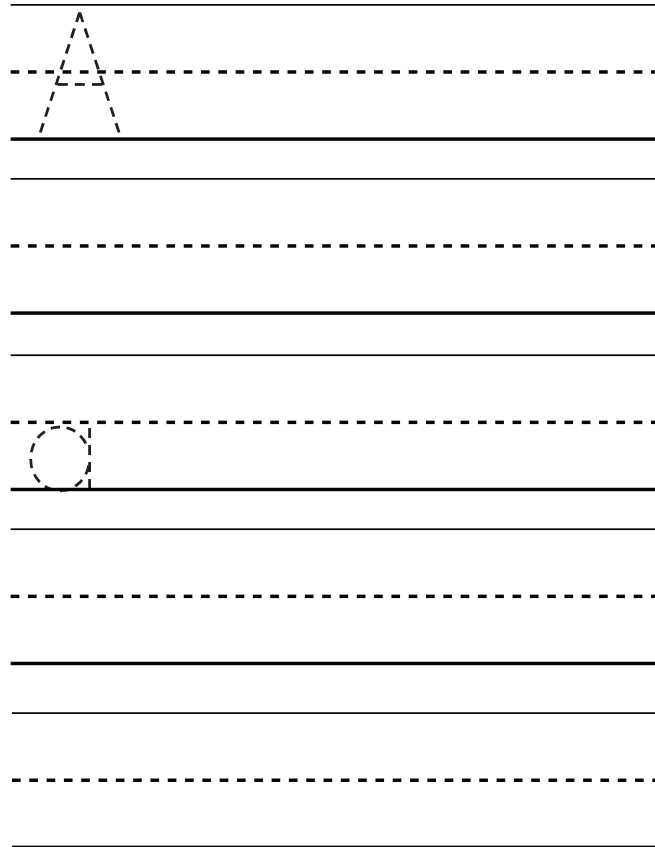
Underline the uppercase. Circle the lower case.



Trace



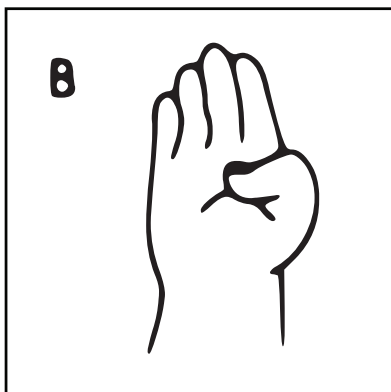
Write



Name _____

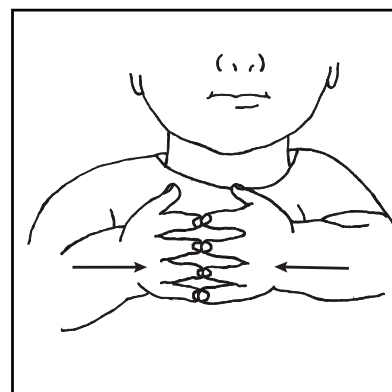
ASLTeachingResources.com

Date _____



B b

Ball



Claw hand fingers tap 2x.

Underline the uppercase. Circle the lower case.

A collection of uppercase 'B' and lowercase 'b' letters scattered around a central image of a beach ball. The letters are intended for a sorting or identification activity.

Trace

Tracing practice lines for the letter B. The first two rows show uppercase 'B' for tracing. The next three rows show lowercase 'b' for tracing. The final row shows alternating uppercase 'B' and lowercase 'b' for tracing.

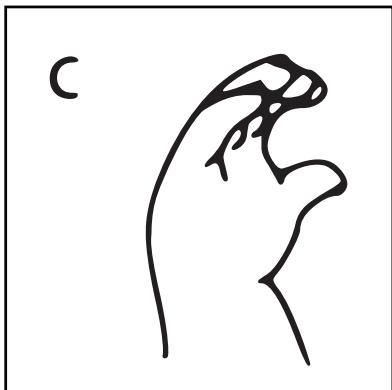
Write

Writing practice lines for the letter B. The first row shows a dashed uppercase 'B' for tracing, followed by empty lines for independent writing. The next three rows show a dashed lowercase 'b' for tracing, followed by empty lines for independent writing. The final row shows alternating dashed uppercase 'B' and lowercase 'b' for tracing, followed by empty lines for independent writing.

Name _____

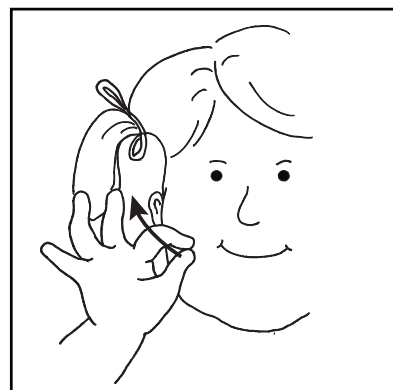
ASLTeachingResources.com

Date _____



C c

Cat



Underline the uppercase. Circle the lower case

At cheek, move right hand towards ear 2x.

C b C c C

c c a C

c b c C A



C B c C a C

b C b a C

C a C c C c

Trace

C C C C

C C C C

C C C C

C C C C

C C C C

Write

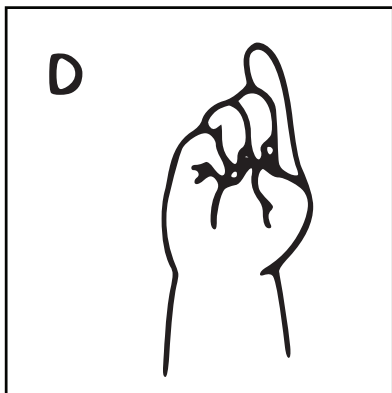
C

C

Name _____

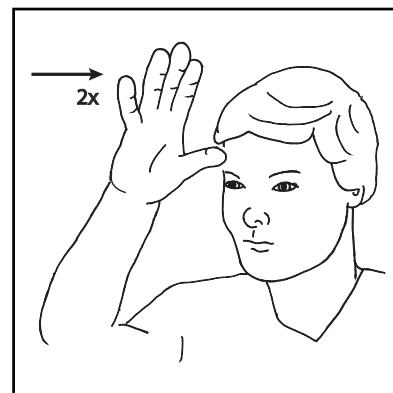
ASLTeachingResources.com

Date _____



D d

Dad

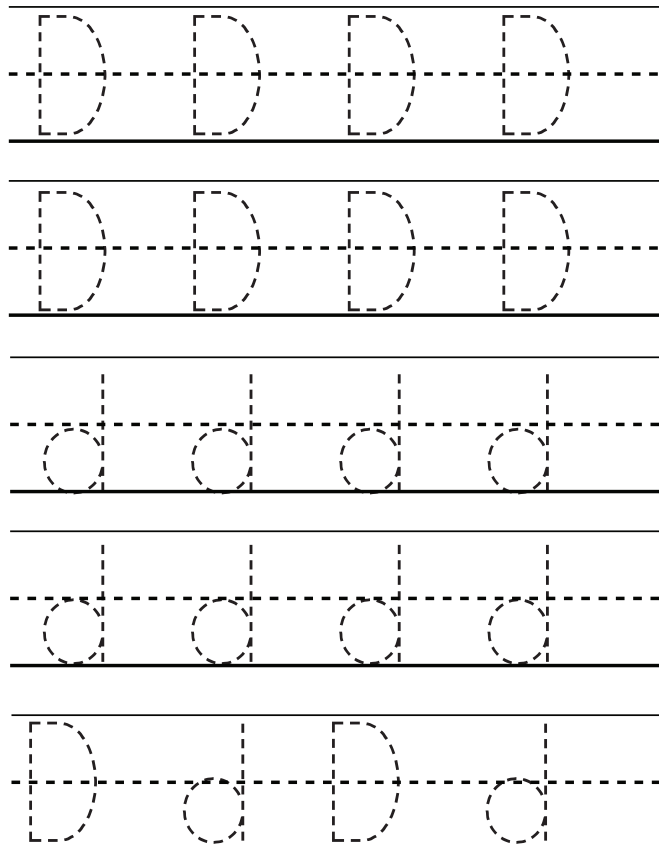


Thumb taps forehead 2x.

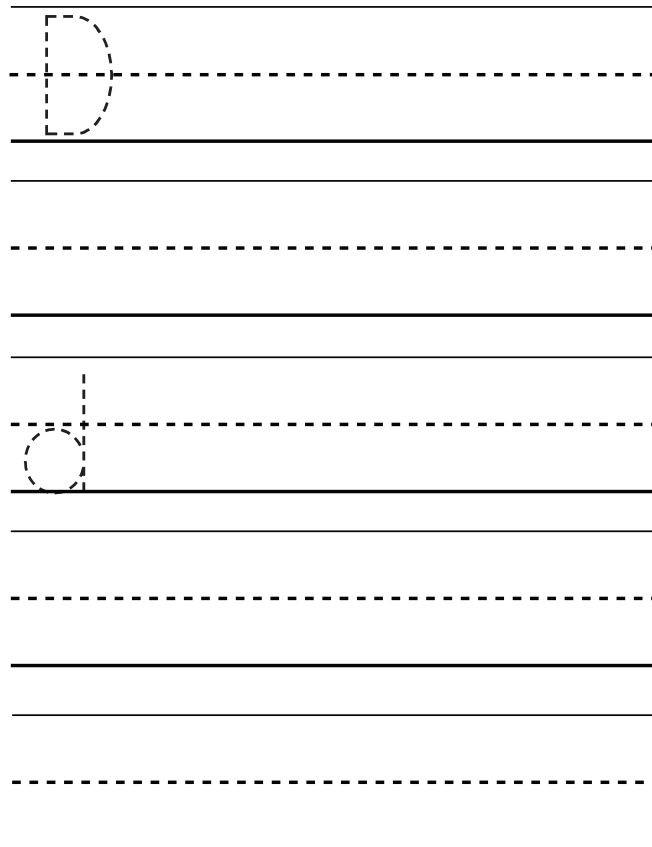
Underline the uppercase. Circle the lower case.



Trace



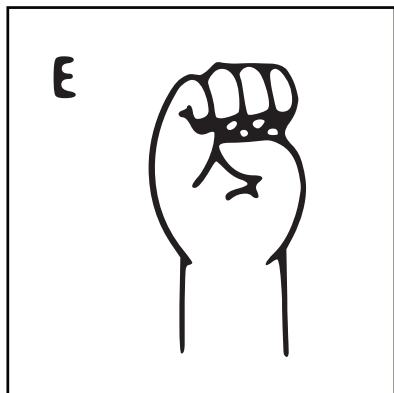
Write



Name _____

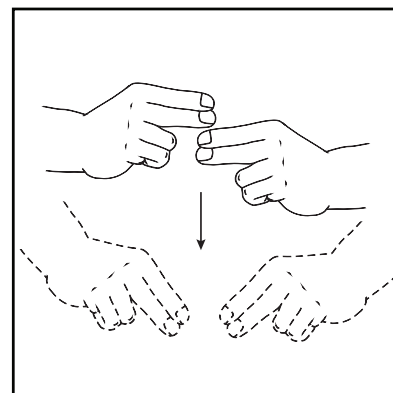
ASLTeachingResources.com

Date _____



E e

Egg

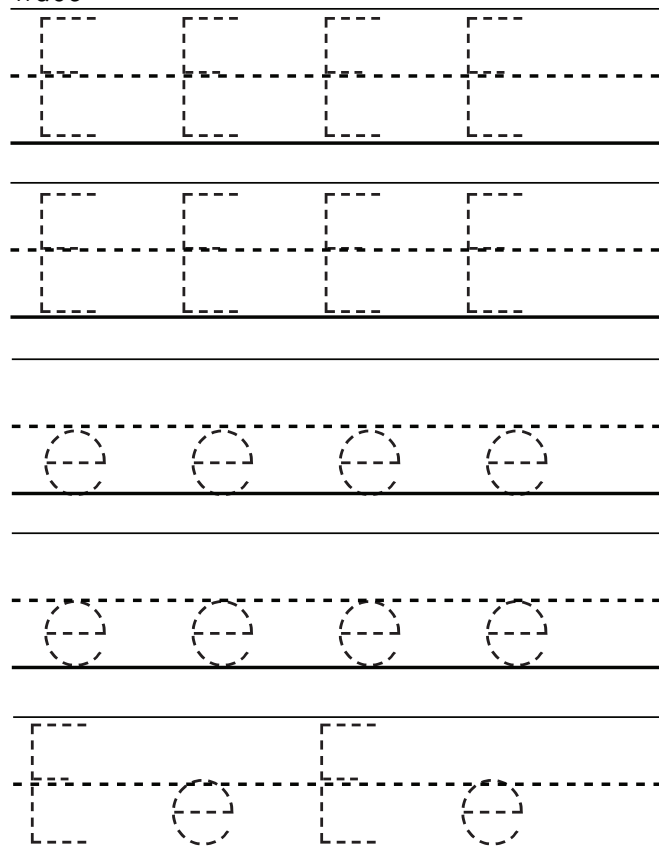


Move both "H" hands down while seperating.

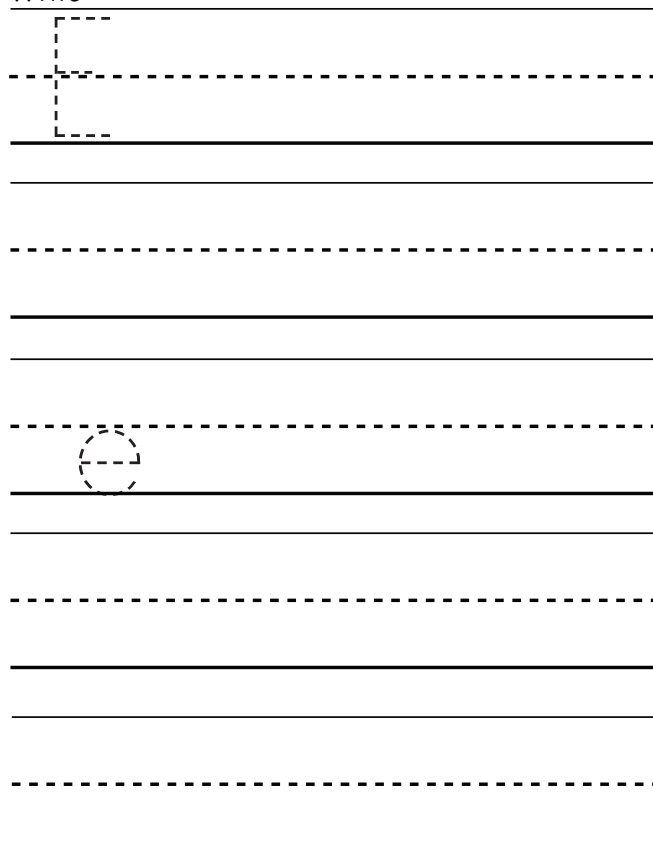
Underline the uppercase. Circle the lower case.



Trace



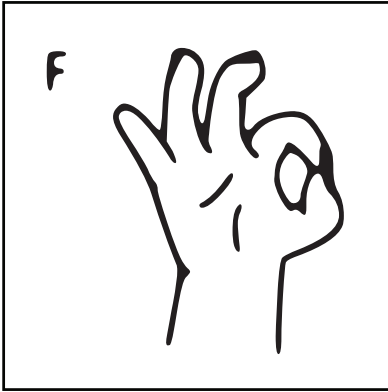
Write



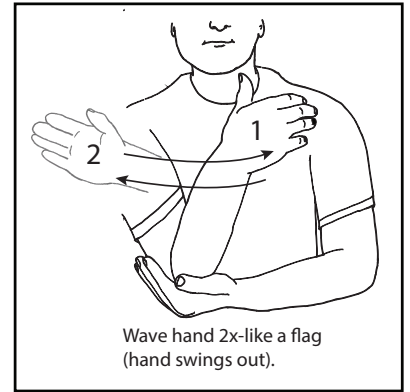
Name _____

ASLTeachingResources.com

Date _____



F f
Flag



Underline the uppercase. Circle the lower case.

A rectangular box containing a word search puzzle. The letters are scattered across the box. In the center, there is an illustration of two American flags on poles. The letters include: f, C, f, F, c, a, f, b, e, F, F, C, A, F, c, F, d, f, b, F.

Trace

Tracing practice lines for the letter F. Each row contains four dashed uppercase 'F's for tracing, followed by blank lines for independent practice. There are five rows of uppercase 'F' tracing and five rows of lowercase 'f' tracing.

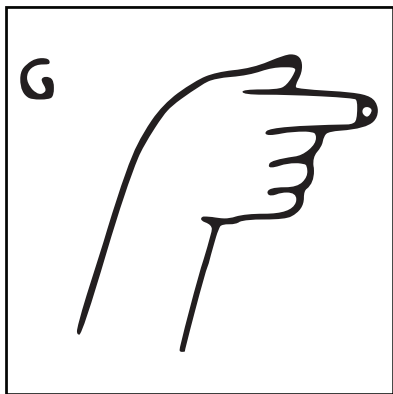
Write

Writing practice lines for the letter F. Each row starts with a dashed uppercase 'F' for tracing, followed by blank lines for independent practice. There are five rows of uppercase 'F' writing and five rows of lowercase 'f' writing.

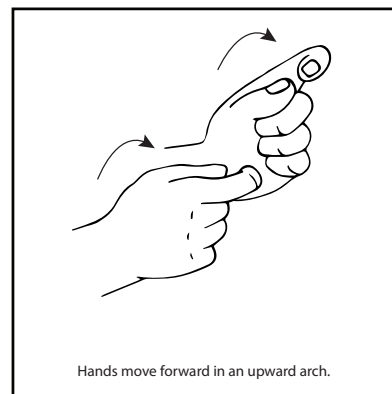
Name _____

ASLTeachingResources.com

Date _____



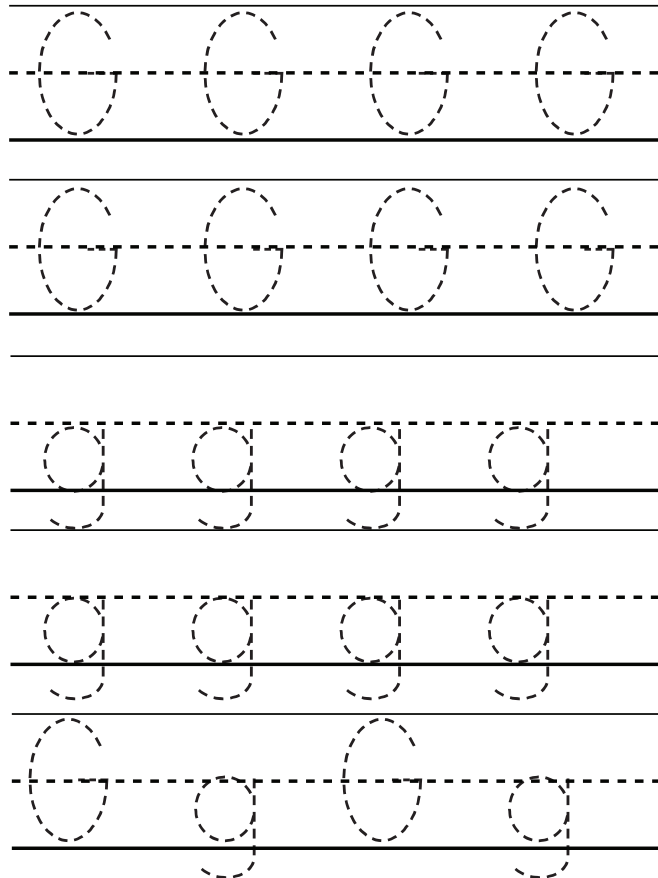
G g
Gift



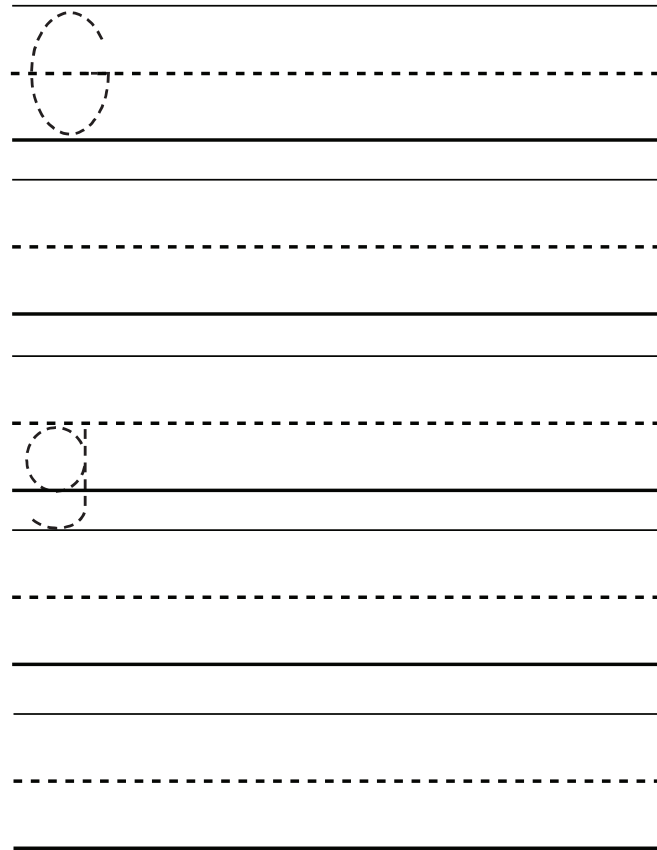
Underline the uppercase. Circle the lower case.

A word search puzzle featuring a central image of a white gift box with a red ribbon. The letters are scattered around the box. The letters are: b, G, g, G, a, G, g, A, h, C, E, G, B, d, g, g, b, C, f, G, c, g.

Trace



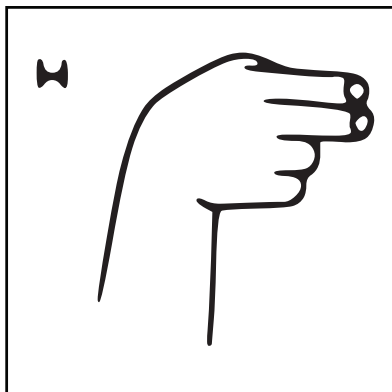
Write



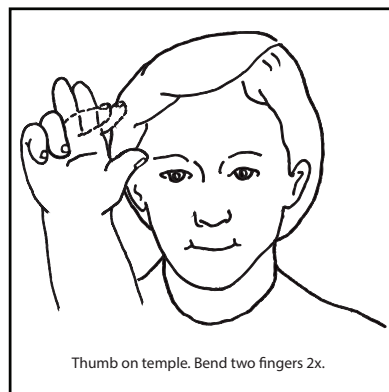
Name _____

ASLTeachingResources.com

Date _____



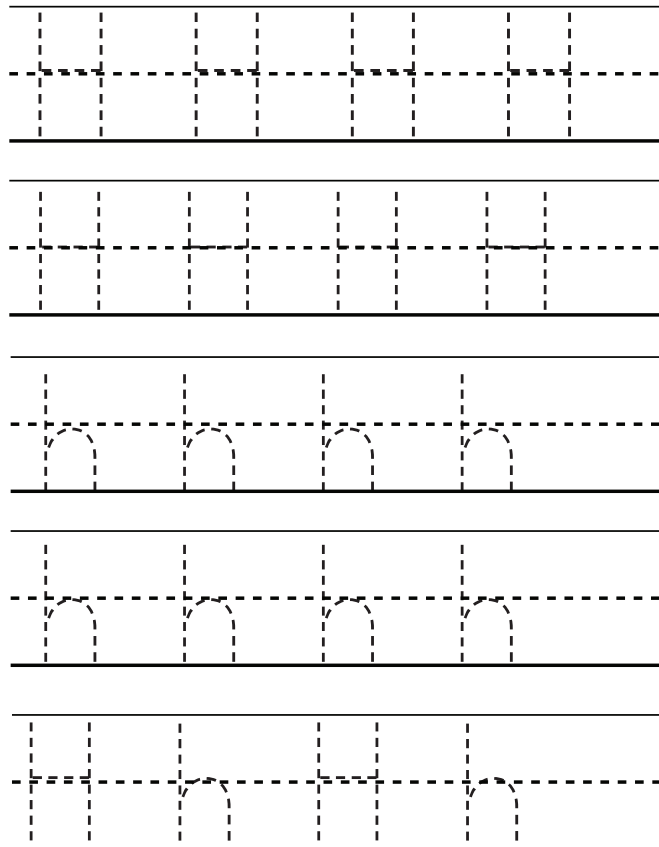
H h
Horse



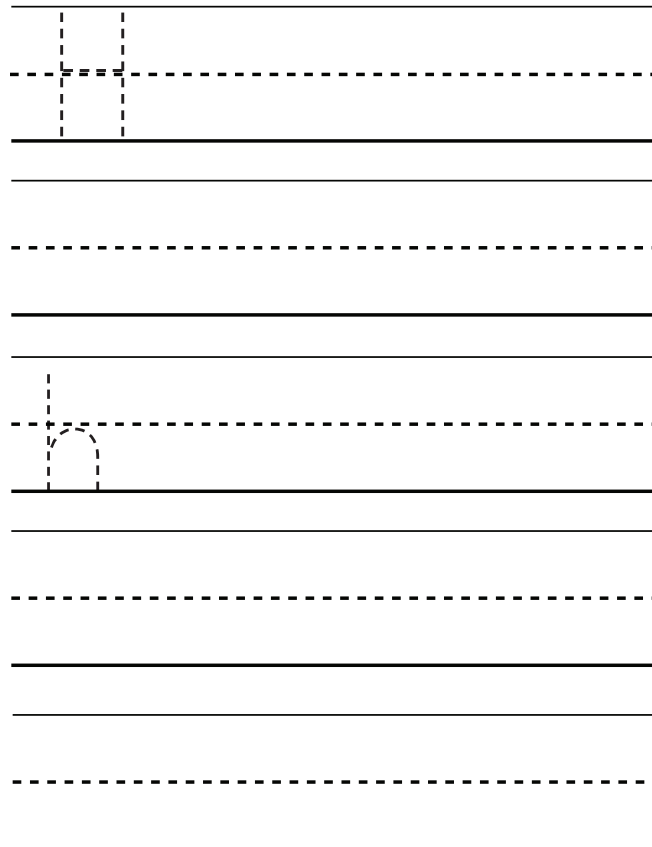
Underline the uppercase. Circle the lower case.



Trace



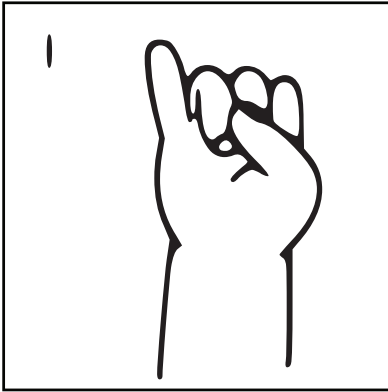
Write



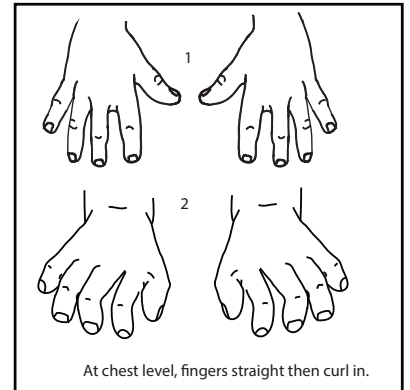
Name _____

ASLTeachingResources.com

Date _____



I i
Ice



Underline the uppercase. Circle the lower case.

A word search puzzle featuring the letters I, i, A, C, B, D, and a central image of ice cubes.

Trace

Tracing practice lines for the letter 'I' and 'i'.

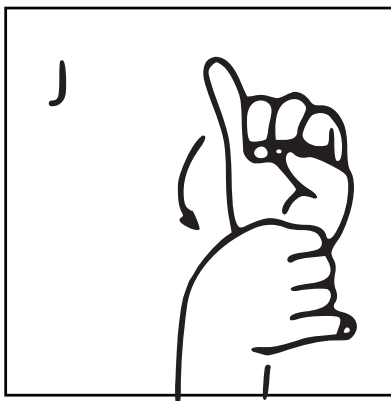
Write

Writing practice lines for the letter 'I' and 'i'.

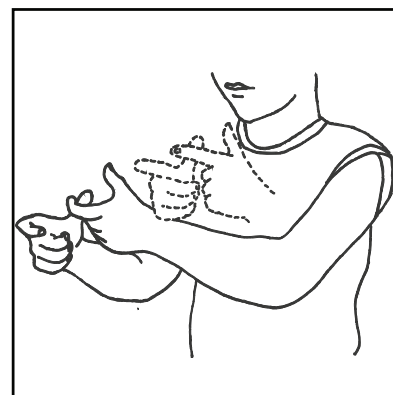
Name _____

ASLTeachingResources.com

Date _____



J j
Jog

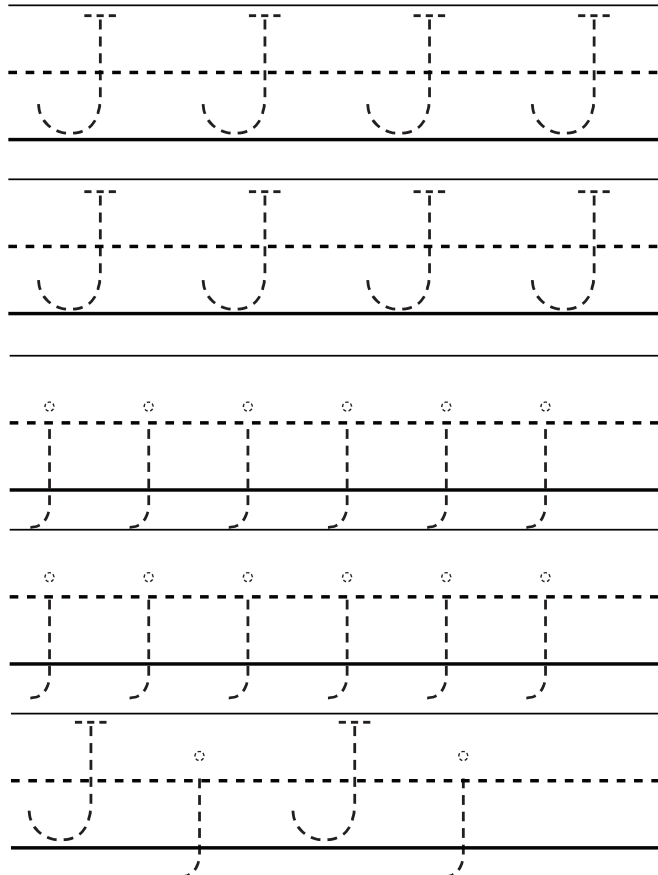


Hands move forward as index finger bends 2x.

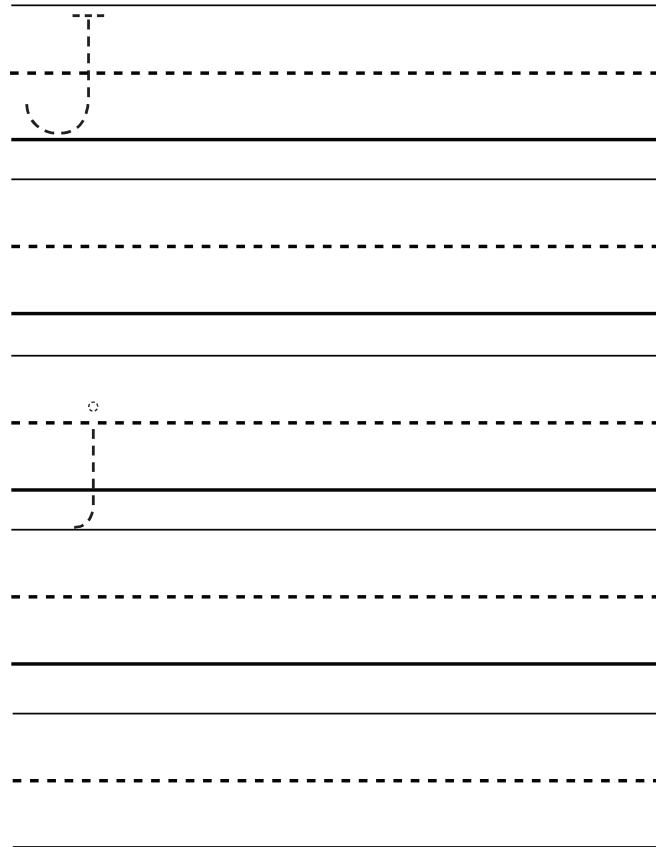
Underline the uppercase. Circle the lower case.

Handwriting practice area featuring a central image of a child in an orange shirt. To the left and right of the child are various letters (J, j, C, c, a, b, h, I, A) for identification. The letters are arranged in a way that encourages the student to underline uppercase letters and circle lowercase letters.

Trace



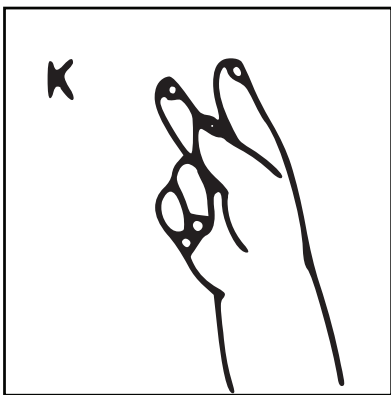
Write



Name _____

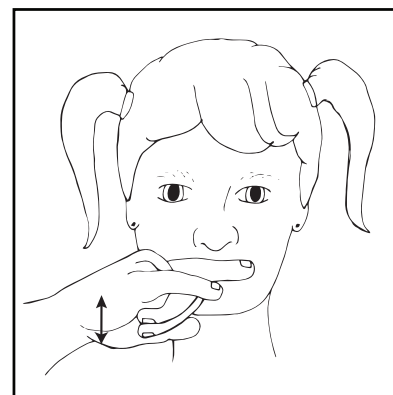
ASLTeachingResources.com

Date _____



K k

Kid



Underline the uppercase. Circle the lower case.

Keep finger on lip, move wrist up & down.

Handwriting practice area featuring a central photo of a smiling boy. To his left are the letters: K, d, k, B, a, K, E, c, K, b, k, K, H. To his right are the letters: k, c, K, k, K, F, J, C, a, k, K, g.

Trace

Tracing practice lines for uppercase 'K' and lowercase 'k'. Each row contains four dashed letters for tracing, with vertical dashed lines separating them.

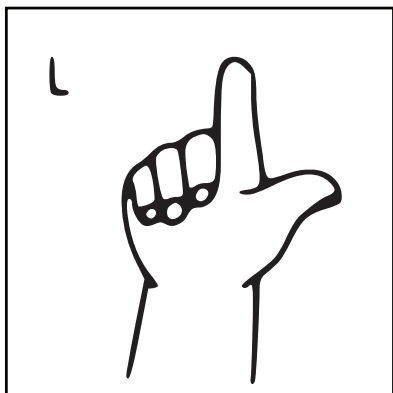
Write

Handwriting practice lines for uppercase 'K' and lowercase 'k'. Each row starts with a dashed letter for tracing, followed by blank space for independent writing.

Name _____

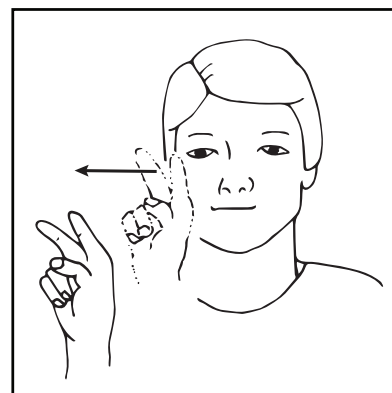
ASLTeachingResources.com

Date _____



L I

Look



"V" hand moves forward from the eyes.

Underline the uppercase. Circle the lower case.

L g c k L K I L B
e L B L L C b f L C E
d j



Trace

L	L	L	L
L	L	L	L
L	L	L	L
L	L	L	L
L	L	L	L

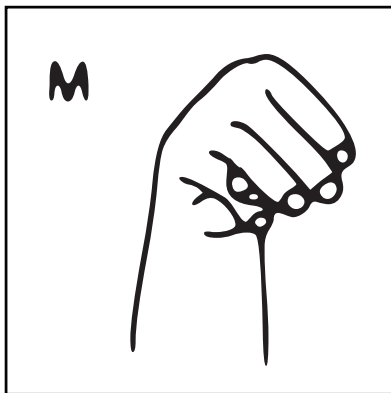
Write

L			

Name _____

ASLTeachingResources.com

Date _____



M m
Mom

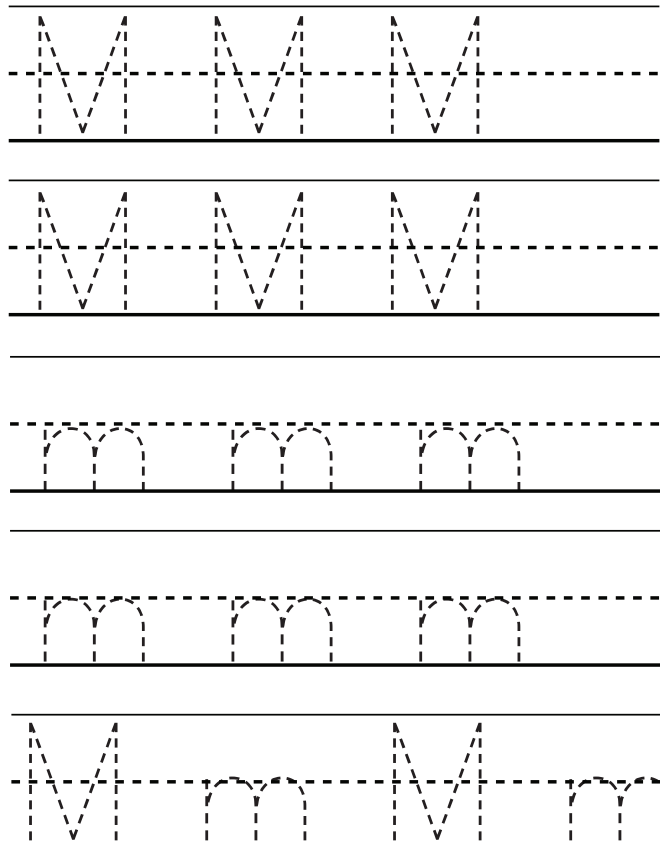


Tap chin with thumb 2x.

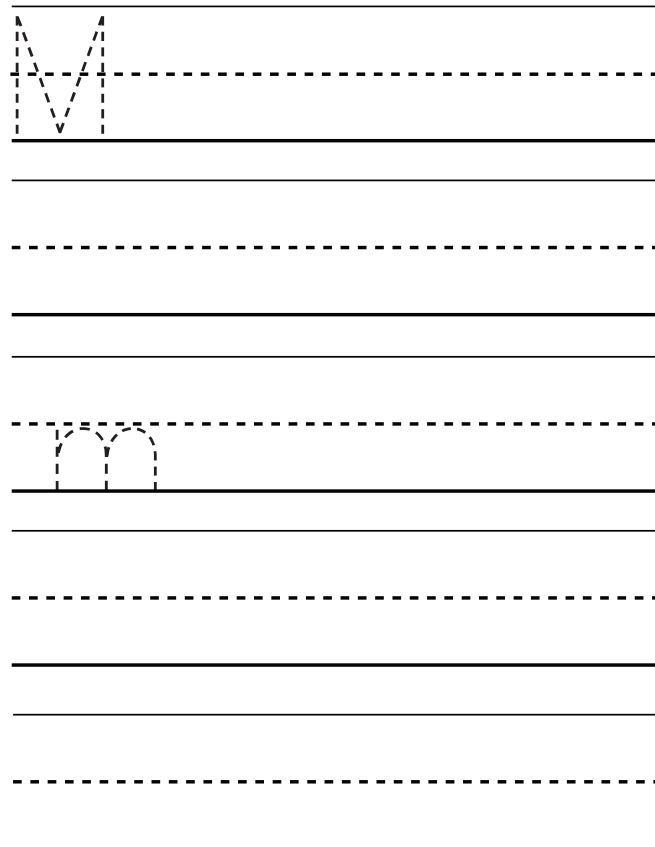
Underline the uppercase. Circle the lower case.

A word search puzzle featuring a central photograph of a smiling young boy and his mother. The letters 'M' and 'm' are scattered throughout the image. The letters are: b, M, M, m, k, M, c, L, E, M, A, g, F, m, M, m, m, M, H, C, a, i, m.

Trace



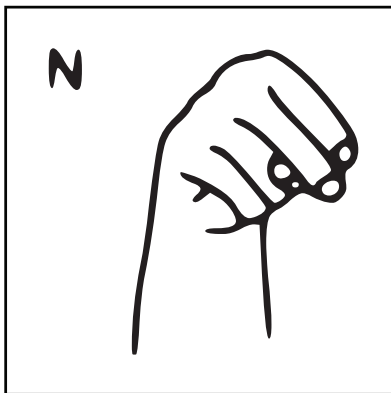
Write



Name _____

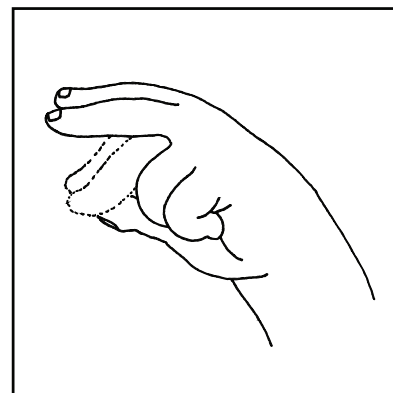
ASLTeachingResources.com

Date _____



N n

No



Two fingers touch thumb.

Underline the uppercase. Circle the lower case.

A word search puzzle featuring a red hand sign pointing down. The letters are scattered in the background:

n N c N g h a N m b n N A B n N M A C a N n N F

Trace

Tracing practice lines for uppercase N and lowercase n. Each row contains four dashed letters for tracing, followed by blank lines for independent practice.

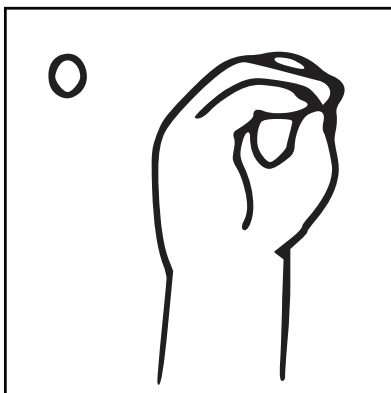
Write

Writing practice lines for uppercase N and lowercase n. Each row contains one dashed letter for tracing, followed by blank lines for independent practice.

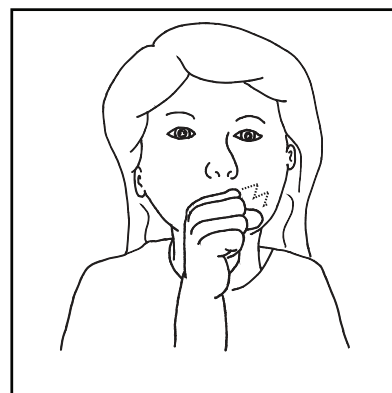
Name

ASLTeachingResources.com

Date



O o
Orange

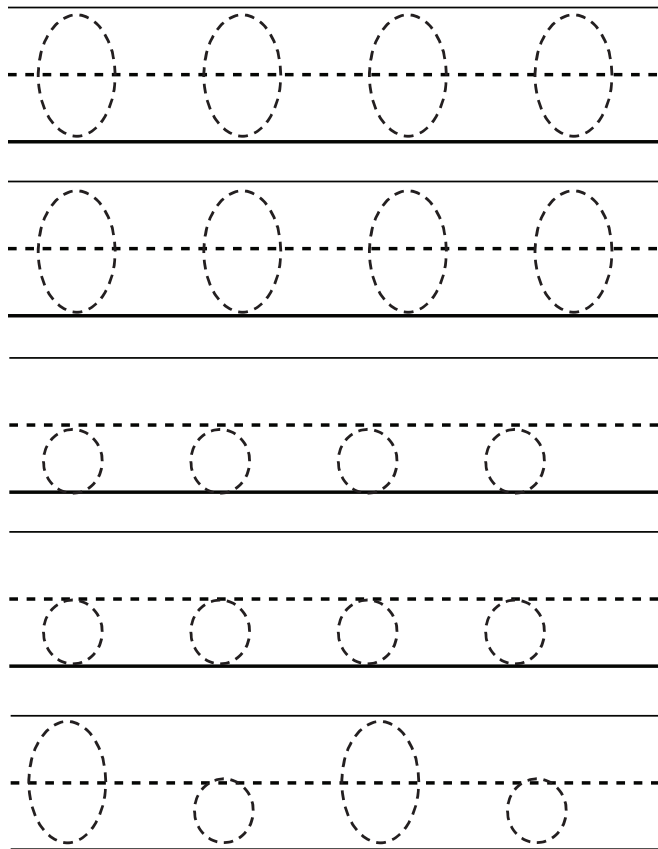


Right hand squeezes 2x.

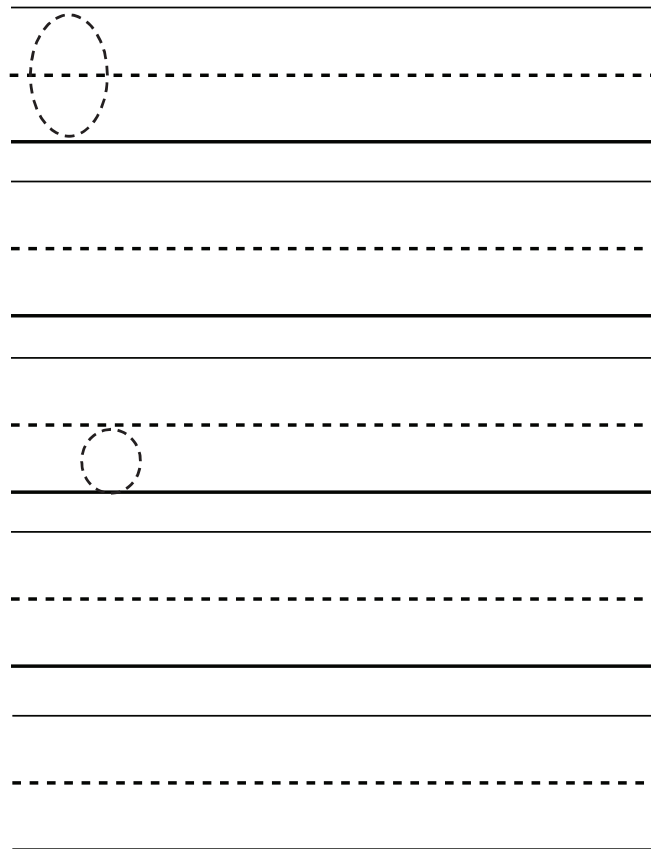
Underline the uppercase. Circle the lower case.

N O B C L b o o o k E A a O C o O J c

Trace



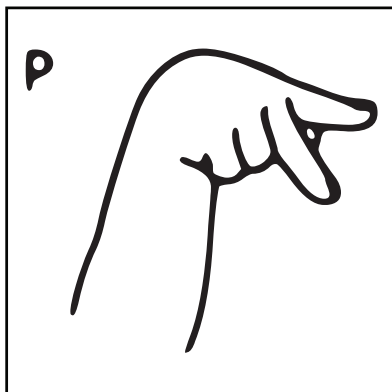
Write



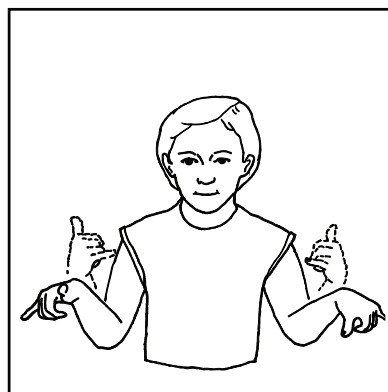
Name _____

ASLTeachingResources.com

Date _____



P p
Play



"Y" hands shake 2x.

Underline the uppercase. Circle the lower case.

Handwriting practice area containing a word search puzzle. The letters are scattered across the page, including uppercase 'P' and lowercase 'p'. A central image shows several colorful dice. The letters are: b, p, c, p, o, p, L, p, A, p, F, a, P, C, D, o, g, h.

Trace

Tracing practice lines for uppercase 'P' and lowercase 'p'. Each row contains four dashed letters for tracing, followed by solid lines for independent practice.

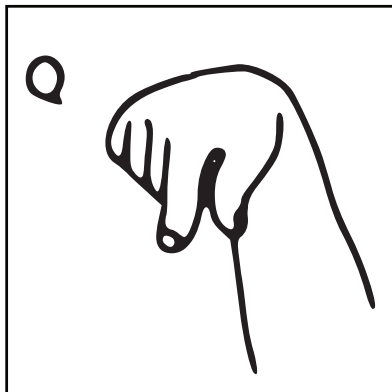
Write

Writing practice lines for uppercase 'P' and lowercase 'p'. Each row contains one dashed letter for tracing, followed by solid lines for independent practice.

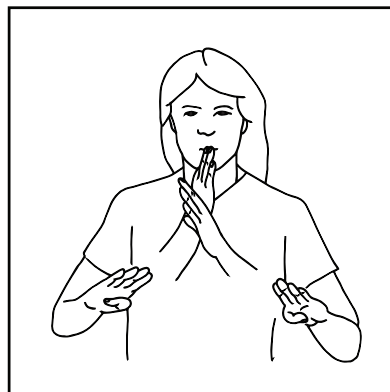
Name

ASLTeachingResources.com

Date _____

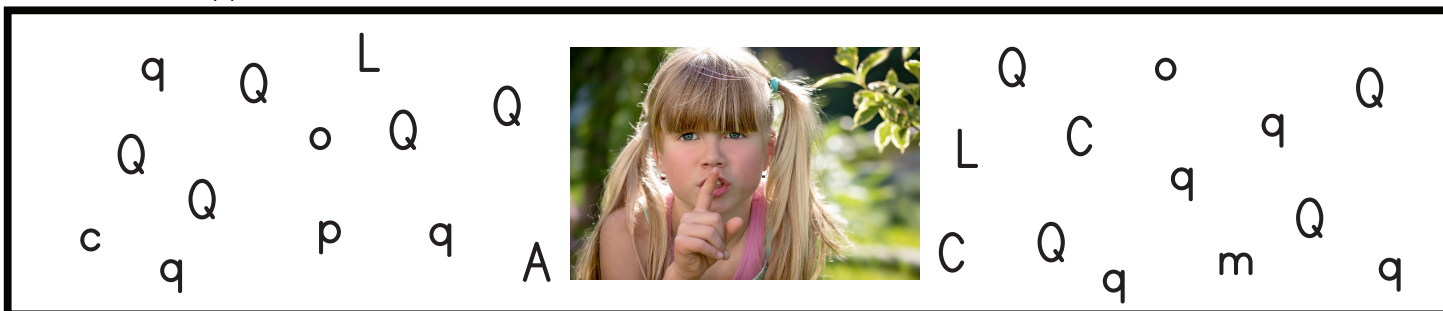


Q q
Quiet

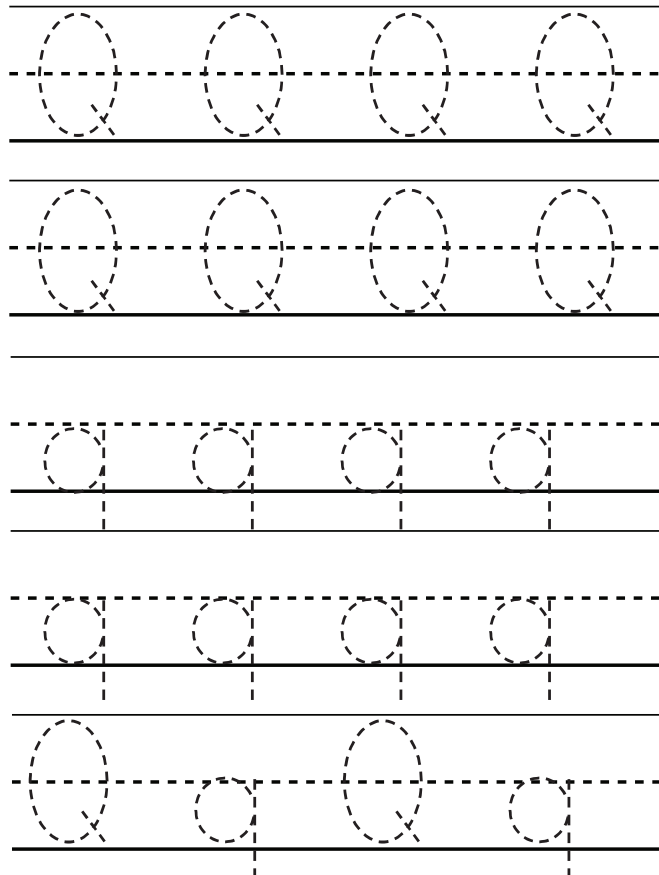


Bring hands out and downward.

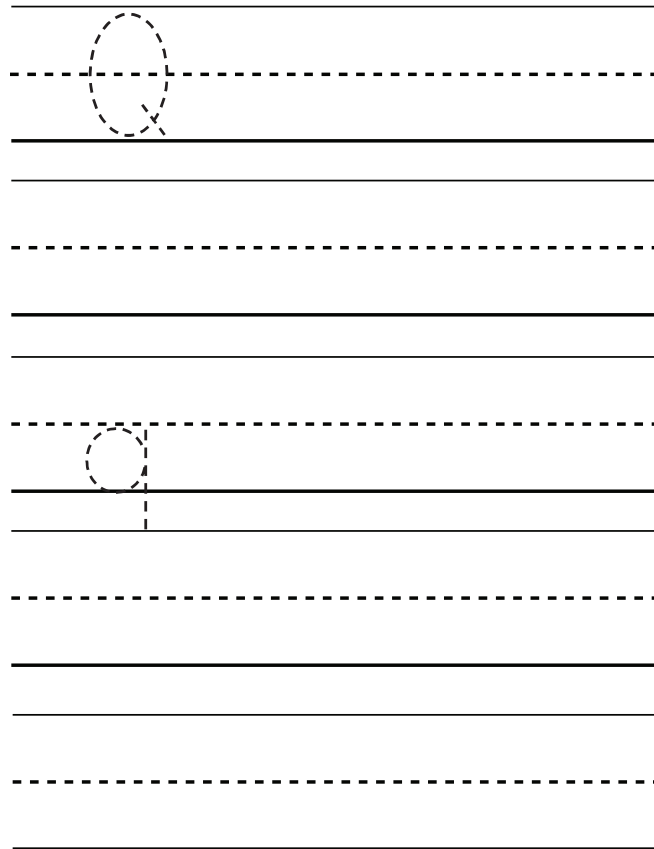
Underline the uppercase. Circle the lower case.



Trace



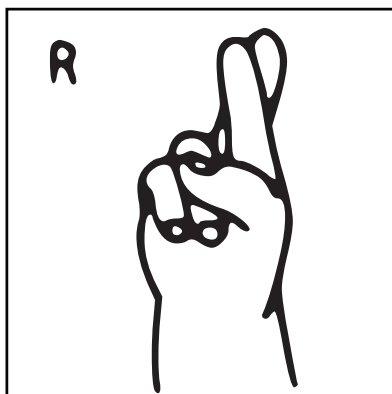
Write



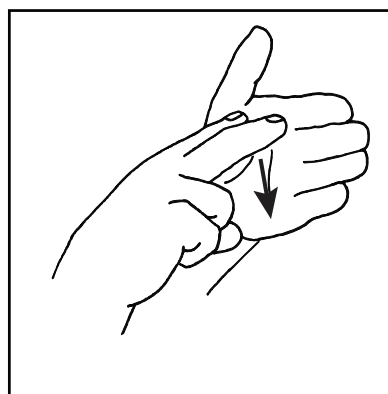
Name _____

ASLTeachingResources.com

Date _____



R r
Read



"V" fingers become the eyes reading.

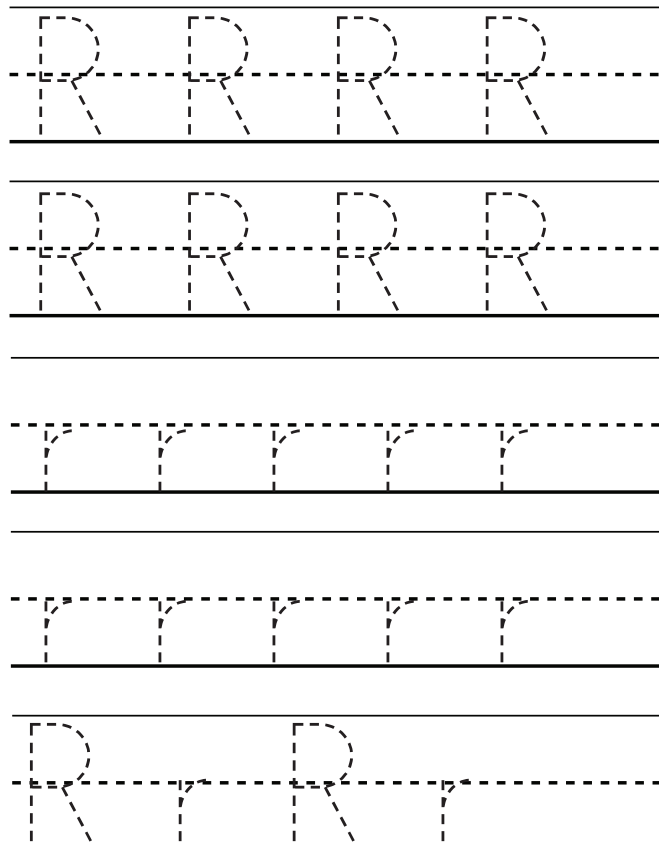
Underline the uppercase. Circle the lower case.

r R c R
q a r
p r R r R r

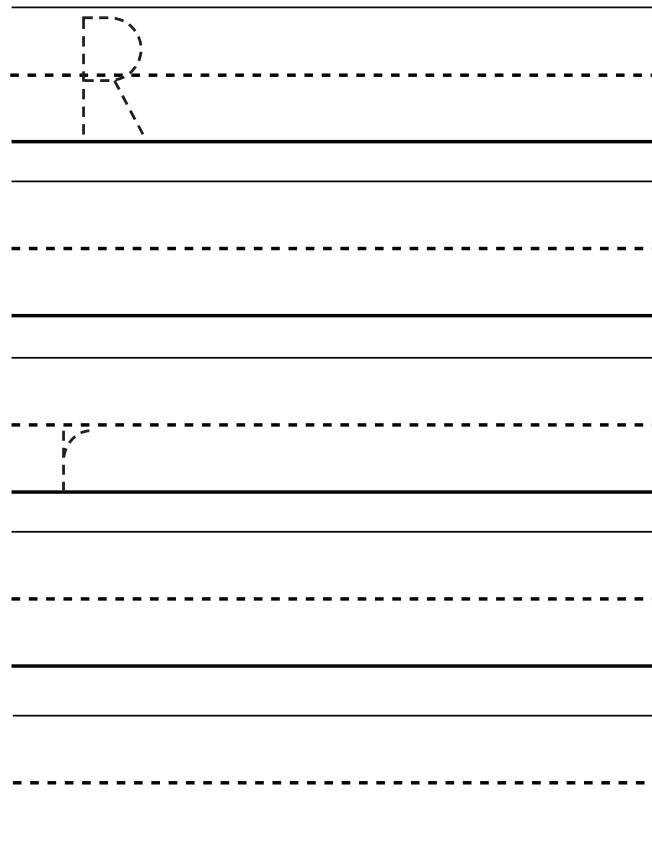


R R Q G
r r R
C R C r E r

Trace



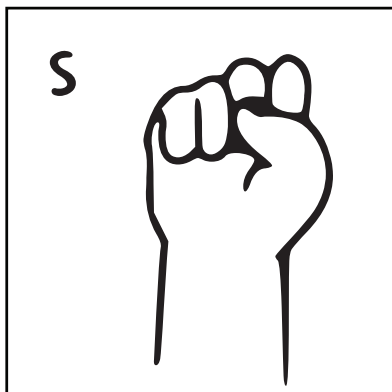
Write



Name _____

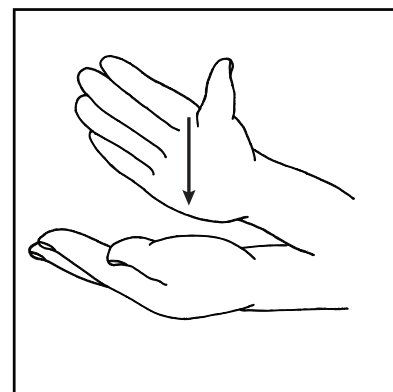
ASLTeachingResources.com

Date _____



S s

Stop

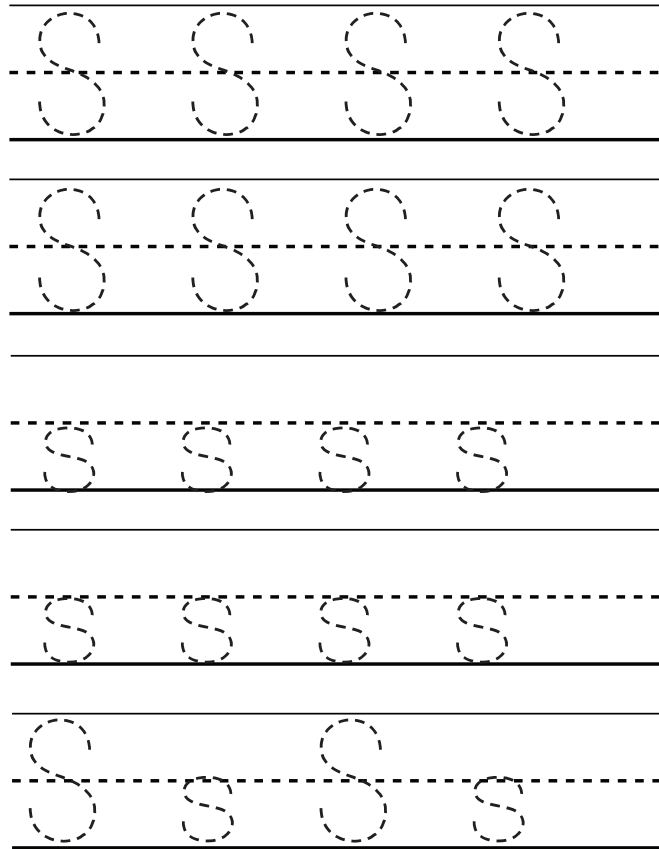


Underline the uppercase. Circle the lower case.

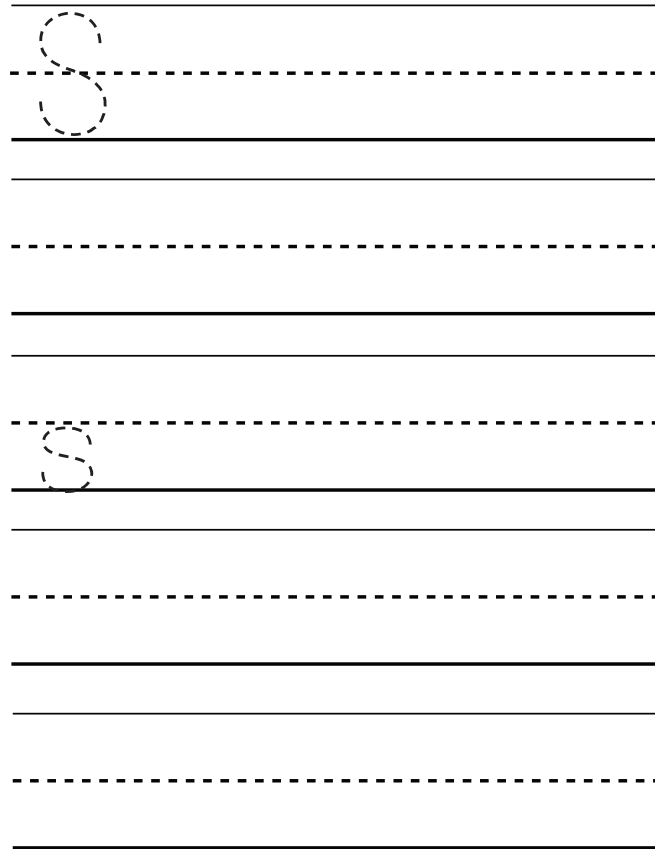
Edge of right hand lands on left palm.



Trace



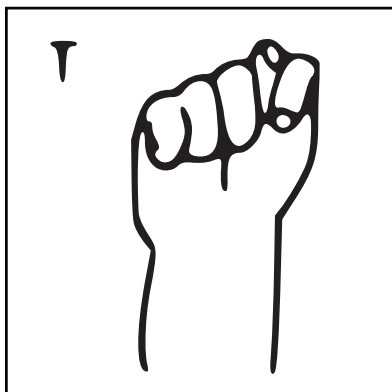
Write



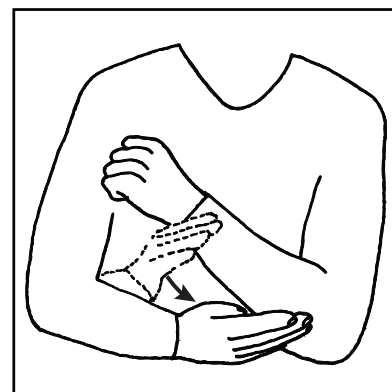
Name _____

ASLTeachingResources.com

Date _____



T t
Trash



Hand arches from wrist to elbow.

Underline the uppercase. Circle the lower case.

t C c T F T
r A e T t



I t a T
t Q T
C T C t g

Trace

T	T	T	T
T	T	T	T
T	T	T	T
T	T	T	T
T	T	T	T

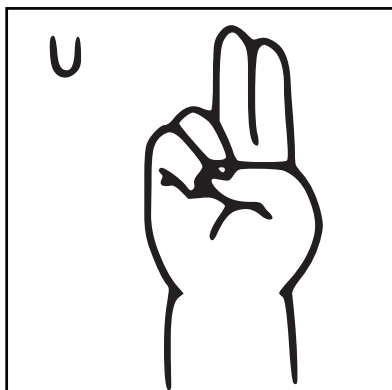
Write

T	

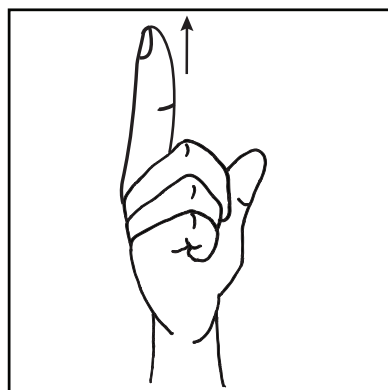
Name

ASLTeachingResources.com

Date




U u
Up



Move hand upwards.

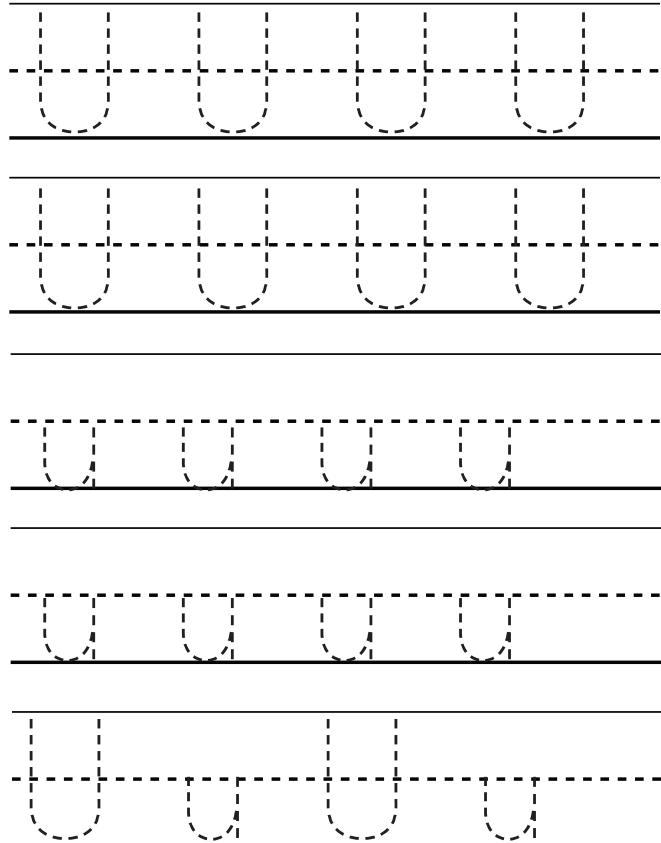
Underline the uppercase. Circle the lower case.

U C L U u d U O U b u T u

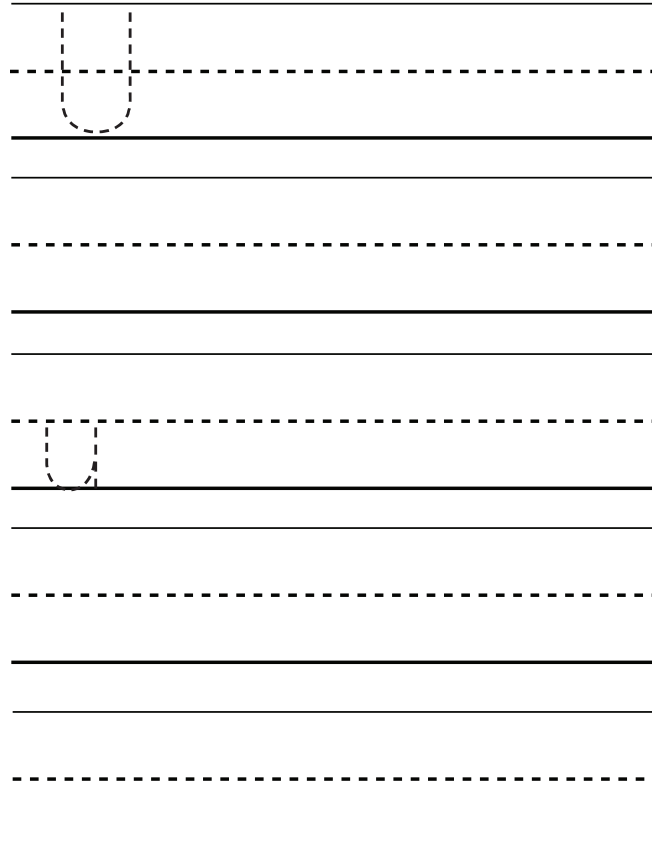


u U U u K e U h u C u g

Trace



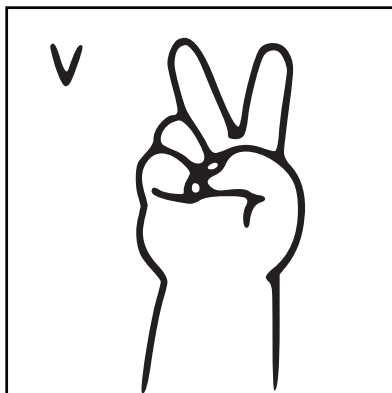
Write



Name _____

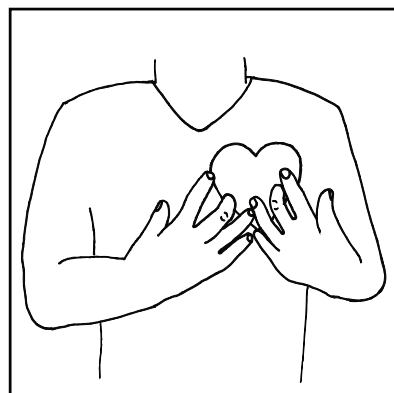
ASLTeachingResources.com

Date _____



V v


Valentine



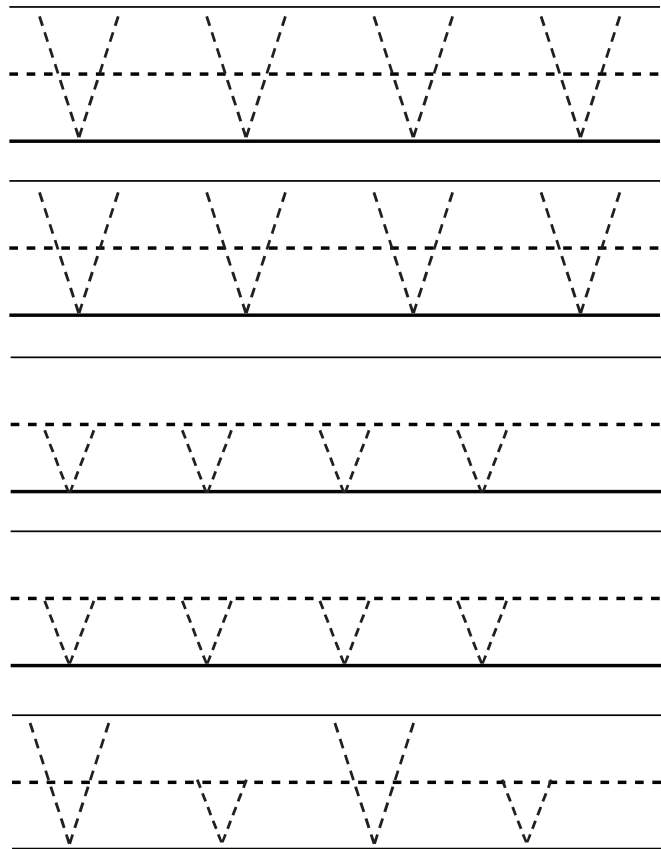
Draw a heart with your middle fingers.

Underline the uppercase. Circle the lower case.

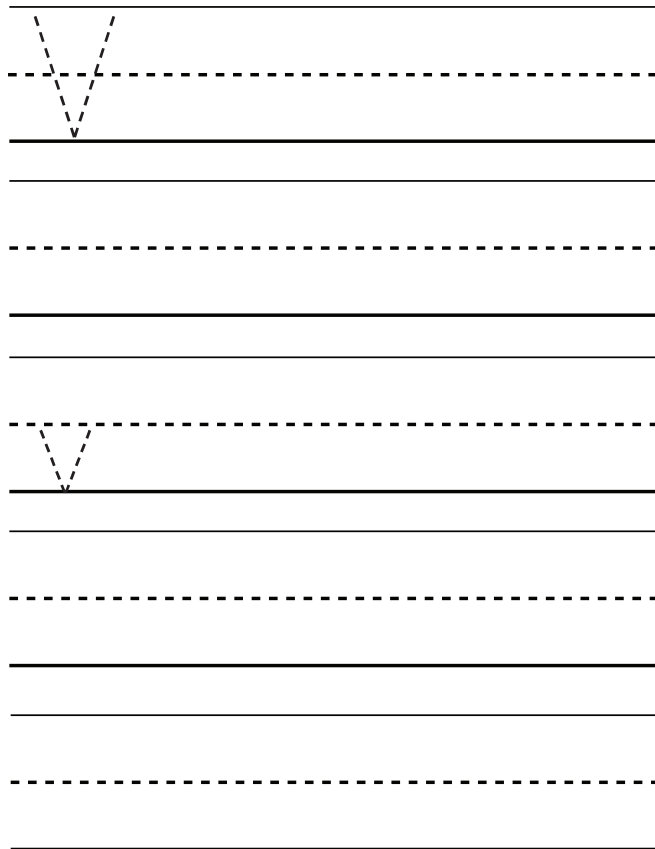
u V v F a V c v V b L v V b U v a V C a V s M v



Trace



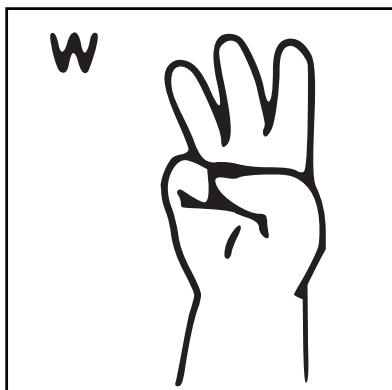
Write



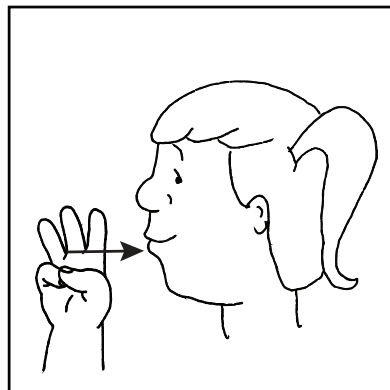
Name

ASLTeachingResources.com

Date



W w
Water



Tap 2x on side of mouth.

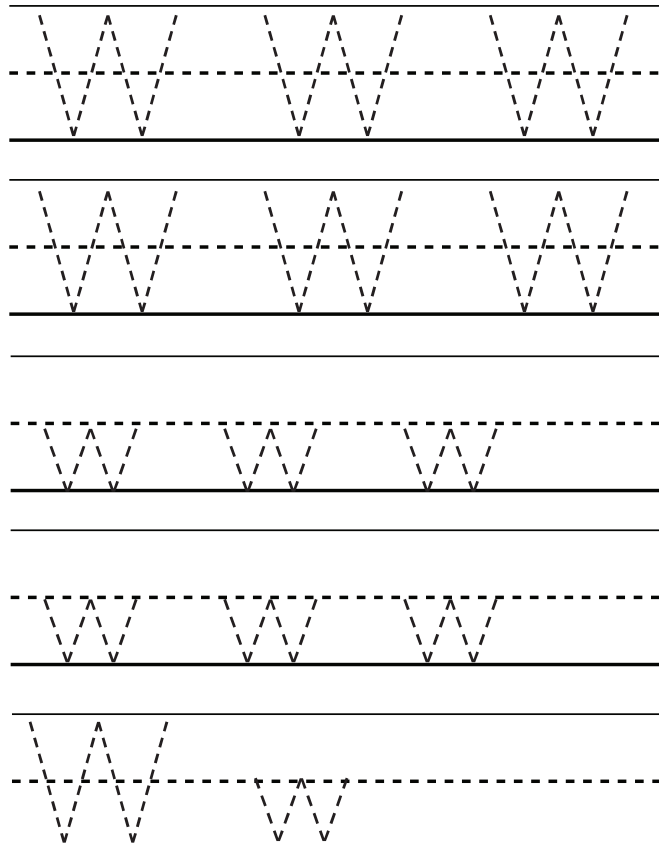
Underline the uppercase. Circle the lower case.

W w E L W c c b W w Q A

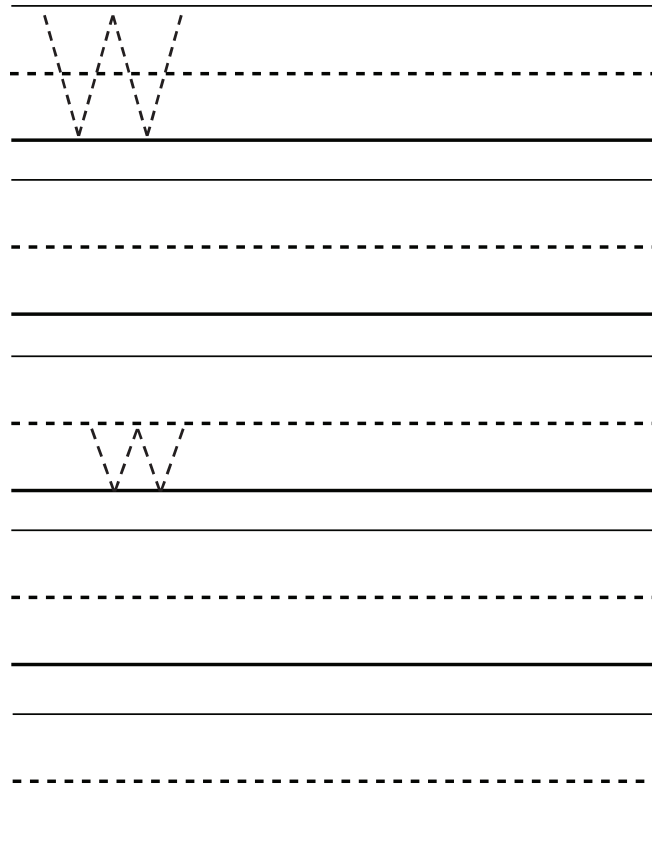


W w M p g b C w o w W c

Trace



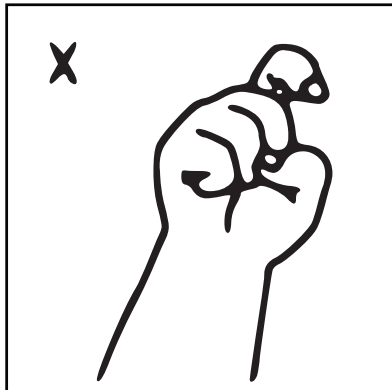
Write



Name _____

ASLTeachingResources.com

Date _____



X x

X-Ray



1. "C" hand at right eye.


2. "C" moves to left hand. Palm faces out.

Underline the uppercase. Circle the lower case.

x R c X

s u x

x v d X W

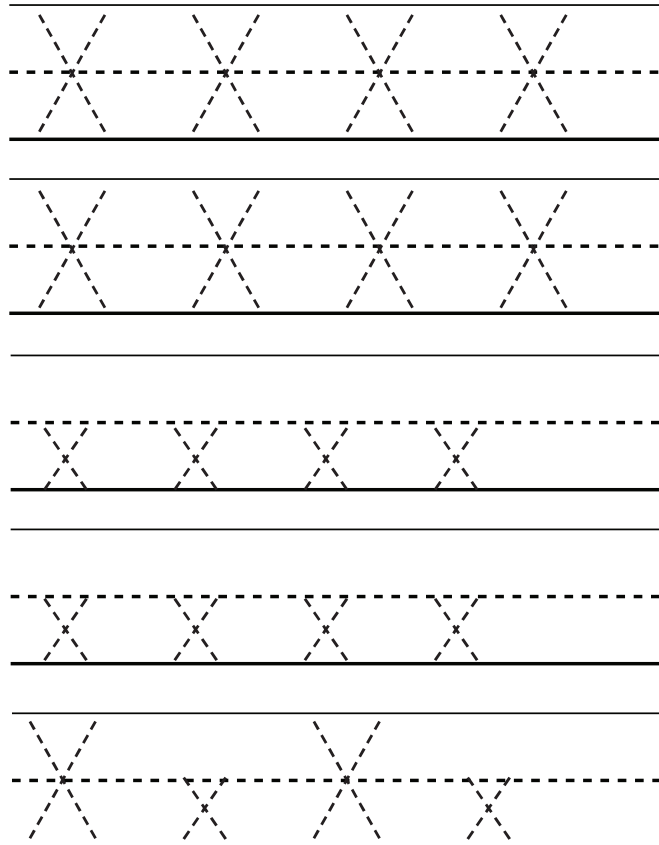


X x X

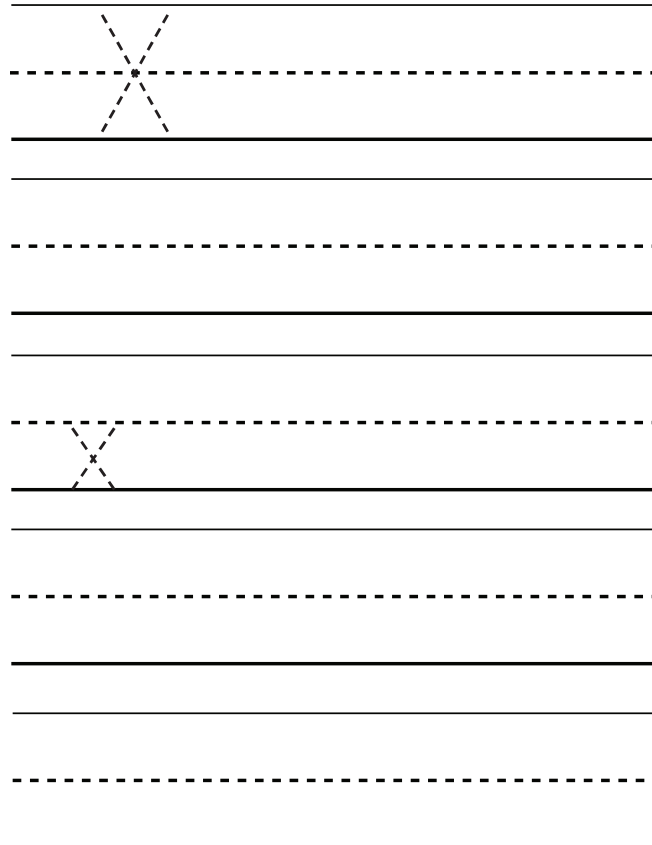
b d i

C a X g c

Trace



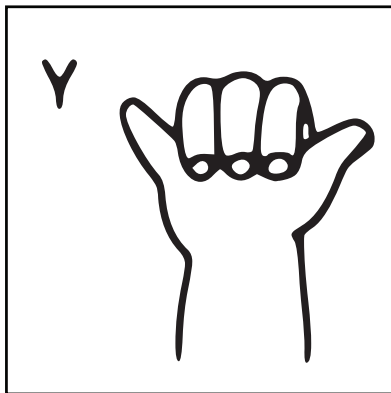
Write



Name _____

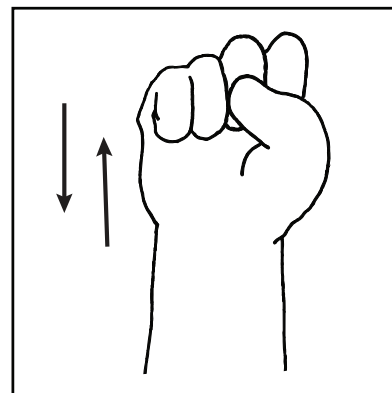
ASLTeachingResources.com

Date _____



Y y

Yes



Bend at wrist up and down.

Underline the uppercase. Circle the lower case.

A large rectangular box containing a word search puzzle. The letters 'Y' and 'y' are scattered throughout. A blue thumbs-up hand icon is in the center. The letters are: y, u, y, Y, Y, c, b, y, V, w, Y, m, q, y, Y, C, h, y, c, k.

Trace

Tracing practice lines for uppercase 'Y' and lowercase 'y'. Each row contains four dashed letters for tracing, with solid lines above and below the dashed letters.

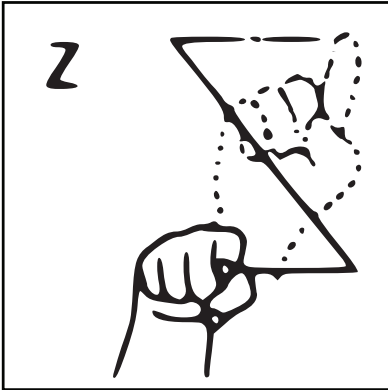
Write

Writing practice lines for uppercase 'Y' and lowercase 'y'. Each row contains a dashed letter for tracing, followed by blank lines for independent writing.

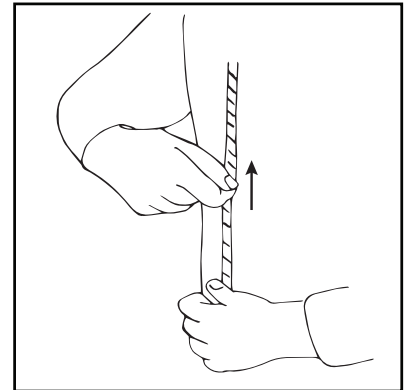
Name _____

ASLTeachingResources.com

Date _____



Z z
Zipper



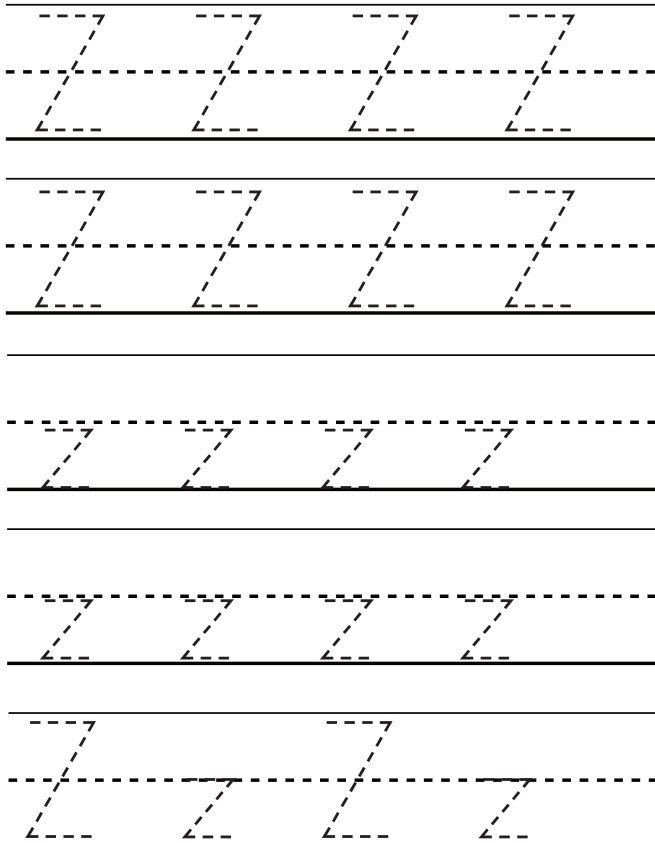
Move hand upwards.

Underline the uppercase. Circle the lower case.

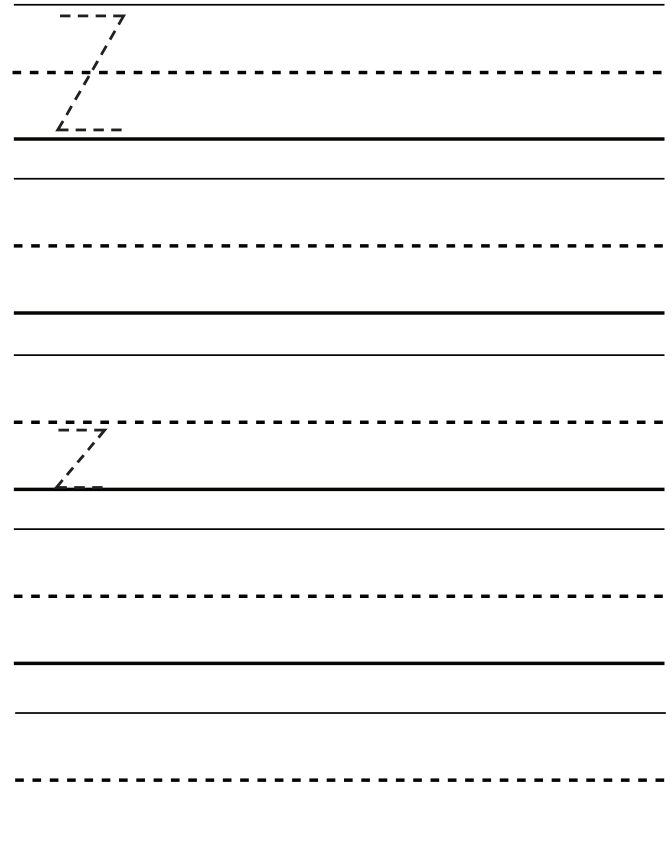
Wc z a Z e z Z c z q Z r Z e z c z w



Trace



Write





ASLTeachingResources.com



ASL WORD OF THE Day





Podcast



More designs at
ASLTeachingResources.com/Shop

Need More ASL?



- ✓ Less Planning
- ✓ Less Stress
- ✓ Less Searching

Student Success

Membership gives you **FREE** access to hundreds of **ASL teaching tools**.

BEST Deal!



GET ACCESS

We give you all the tools necessary to succeed whether you know sign or not.

Sign Language Lesson Plans

Collect the series.



ASLTeachingResources.com

Cynthia F. Long © 2017

Books INCLUDE:

- Teacher's Guide
- Flash cards
- 8x10 of the signs
- Dice game
- Worksheets
- Crafts, Games
- Video Dictionary
- ASL lessons
- *Books 17, 19, 20 have different formats

