

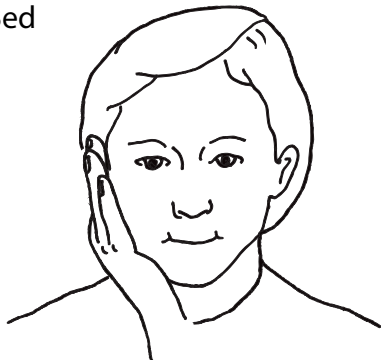
Hospital- I

Name _____

SignBabySign.org®

©SignBabySign All rights reserved.

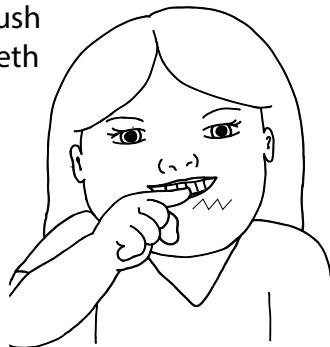
Bed



Right hand on cheek.

www.signbabysign.org®

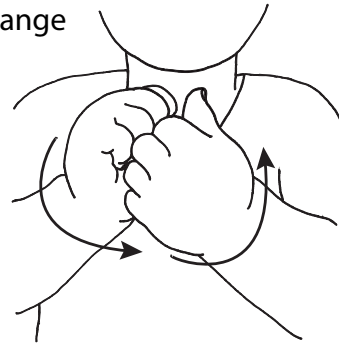
Brush
Teeth



Pretend to brush your teeth.

www.signbabysign.org®

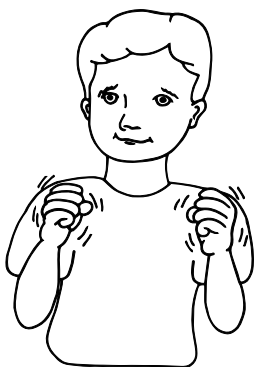
Change



Twist wrists in opposite directions.

www.signbabysign.org®

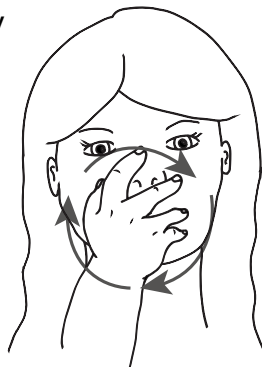
Cold



Hands shake like you are cold.

www.signbabysign.org®

Dizzy



Claw hand moves circular.

www.signbabysign.org®

Eat



"C" hand (fingers on chest) moves down.

www.signbabysign.org®

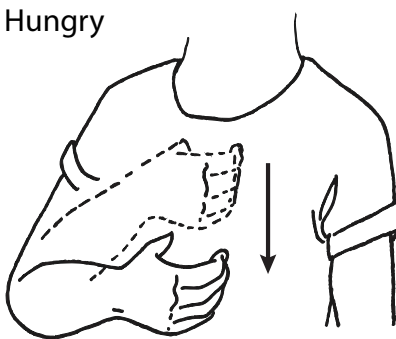
Help



Fist touches palm.

www.signbabysign.org®

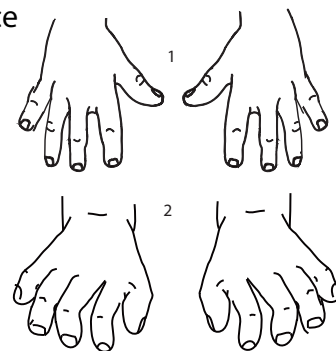
Hungry



"O" hand taps on the mouth 2x.

www.signbabysign.org®

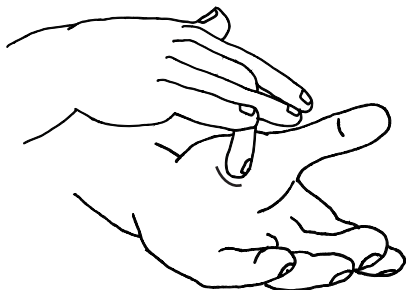
Ice



Fingers point forward then curl in.

www.signbabysign.org®

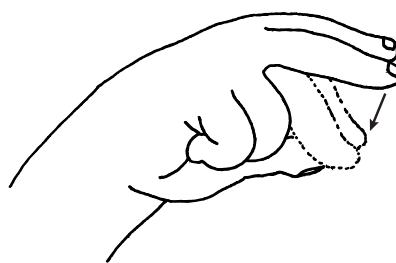
Medicine



Middle finger pivets/rocks on left palm
(don't lift middle finger off palm).

www.signbabysign.org®

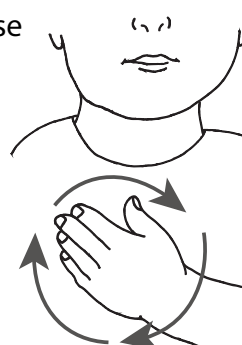
No



Two fingers touch thumb.

www.signbabysign.org®

Please



Move clockwise on chest.

www.signbabysign.org®