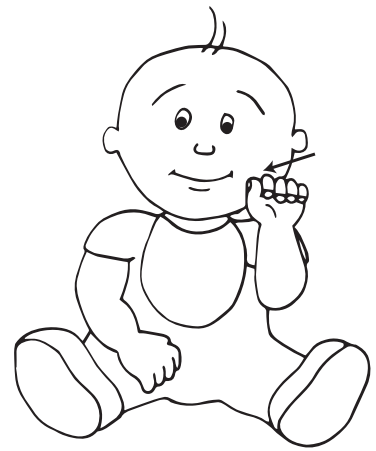


# Bottle

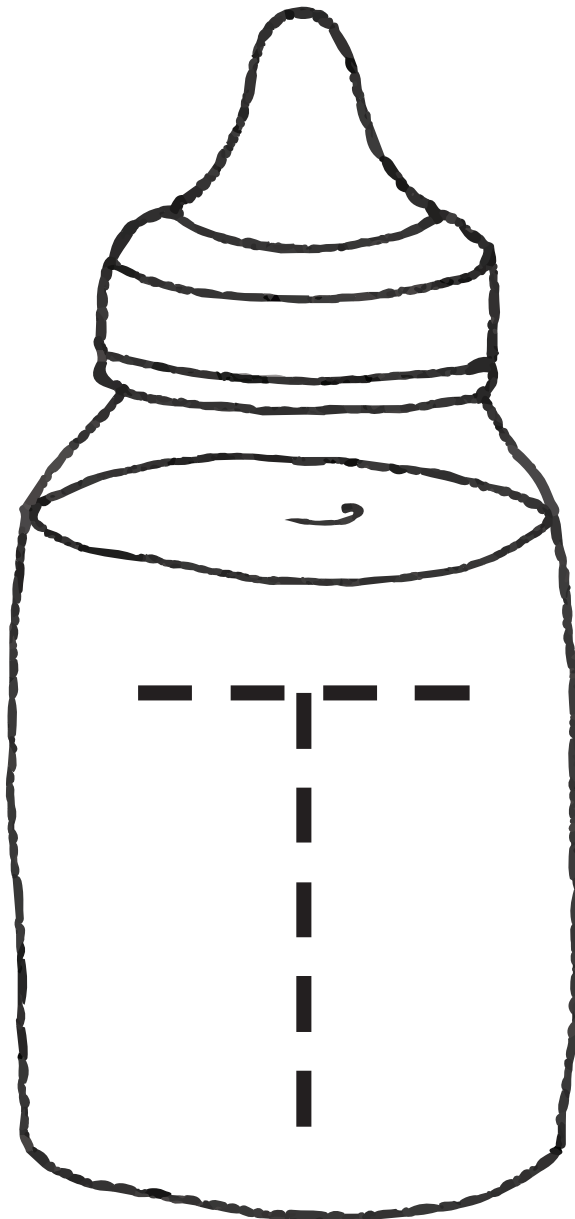
## Full Lesson Plan .99¢

- |                            |                      |
|----------------------------|----------------------|
| 1. Teacher's Guide & Video | 3. Student Worksheet |
| 2. Craft, Game, Idea       | 4. ASL Poster        |



Thumb of fist taps on side of mouth 2x.

Color and trace the letters: T=tall S=short



Child's Name \_\_\_\_\_

[www.signbabysign.org](http://www.signbabysign.org)

Date word was signed \_\_\_\_\_

©SignBabySign All rights reserved